



KINGDOM OF CAMBODIA



Ministry of Economy & Finance
General Department of Customs & Excise

Trade Facilitation and Security and Protection of Society

**National Workshop
on Advancing Trade Facilitation
1-2 June 2010
Phnom Penh Hotel**



The presentation covers as follows:

1. General information
2. Trade Facilitation
3. Security and Protection of Society



1. General Information

- ✓ GDCE has main roles and functions in exercising law and regulations for collecting revenue, protecting the economic and social benefits through preventing and combating all kinds of smuggling activities.
- ✓ The GDCE became the 155th member of WCO on 03 April 2001.
- ✓ Total workforce: 1,206 (15 Oct 2009)
- ✓ GDCE has actively participate in the international and regional customs such as GMS, ASEAN, WCO, etc.

Revenue collected by the GDCE covered more than 60% of total fiscal revenue.

- ✓ GDCE is faced with annually planning for high revenue collection but tariff restructuring reduces duty rates year by year. However, GDCE has strongly committed to meet the revenue collection and exceed target.



2. Trade Facilitation:

✓ **Trade facilitation is a global agenda with a broad meaning.**

Nevertheless, for Customs administration, it is a key policy for inspiring reform of Customs administration management, regulations and Customs procedures

✓ Up to now, GDCE has established new and revised procedures and regulations in order to simplify, harmonize, expedite, and reduce costs and to meet the international standards of customs clearance.

✓ To enhance trade facilitation, the GDCE has outlined a variety of key components including :

- Risk Management
- ASEAN Transit Agreement & GMS - CBTA
- Customs Automation (ASYCUDA World)
- Customs - Private Sector (prakas No. 906 dated 09 Oct 09)
- Public Relation Unit (No.059 dated 22 January 2010)
- Cambodia National Single Window



2. Trade Facilitation (Cont'):

2.1. Risk Management

- ✓ Sub-decree No 21 dated 1st March 2006 on Trade Facilitation through Risk Management
- ✓ An Inter-Ministerial Working Group on Trade Facilitation through Risk Management (Ministerial prakas No.1015 shv./ 24 October 2006).
- ✓ List of Prohibited and Restricted Goods (Sub-decree No. 209 ankr.bk dated 31st December 2007)
- ✓ List of Risk Selectivity Criteria and Customs Broker(GDCE).
- Both List of Prohibited and Restricted Goods and List of Risk Selectivity Criteria were integrated into the ASYCUA World.



2. Trade Facilitation (Cont'):

2.2. ASEAN Transit Agreement & GMS

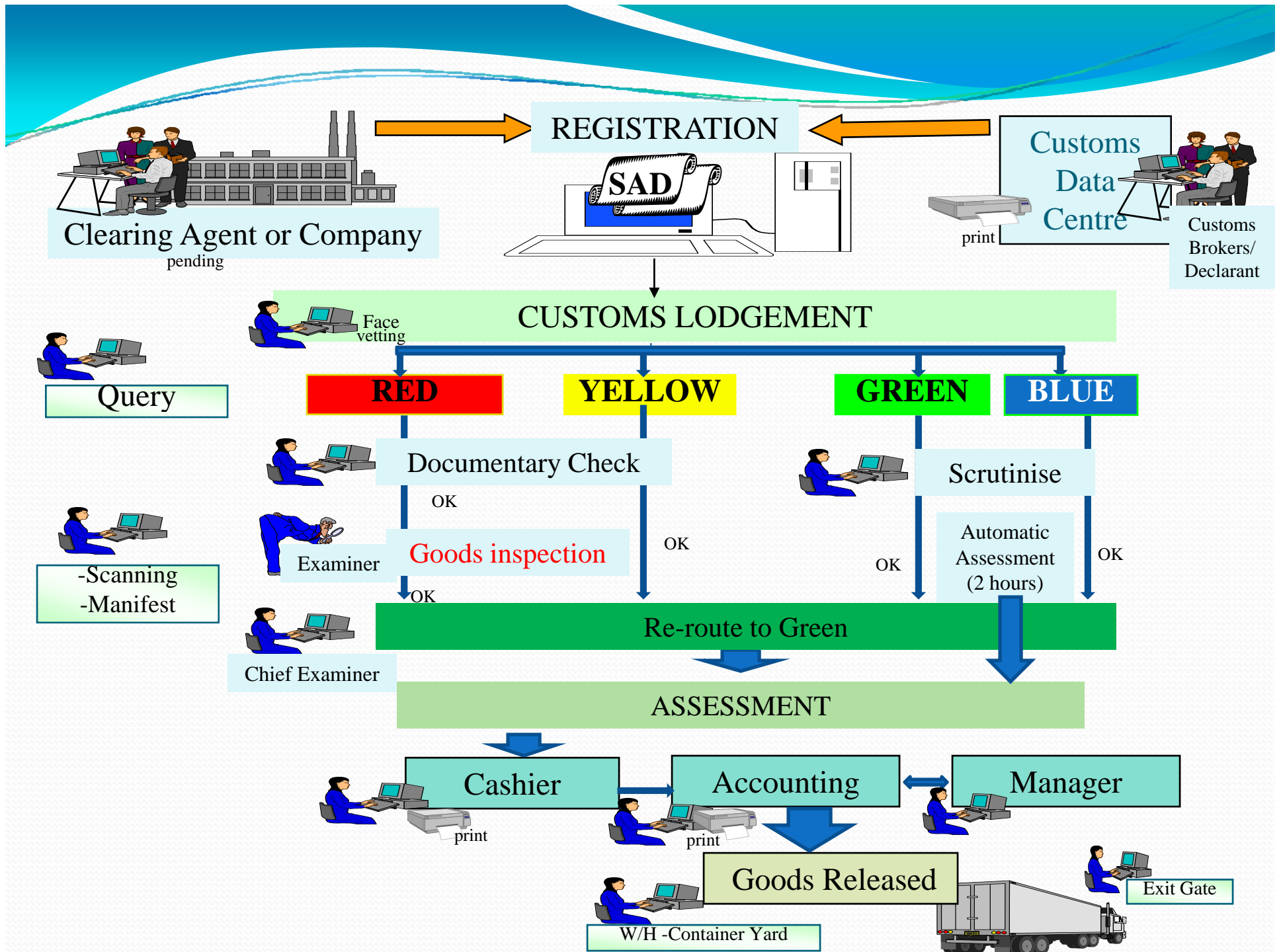
- ✓ the Greater Mekong Sub Region (GMS) Cross Border Transport Agreement (CBTA) and the ASEAN Transit Agreement are other key components in trade facilitation.
- ✓ The aims is reducing physical inspection, reducing costs and time, and expediting the cross border transport of goods to promote trade facilitation and facilitate the cross-regional transport of goods with the purpose of attracting investment and boosting national economic development
- ✓ In activities, the GDCE has sent senior customs officers and technical officers to attend in both GMS and ASEAN platforms related to the transit facility mechanism

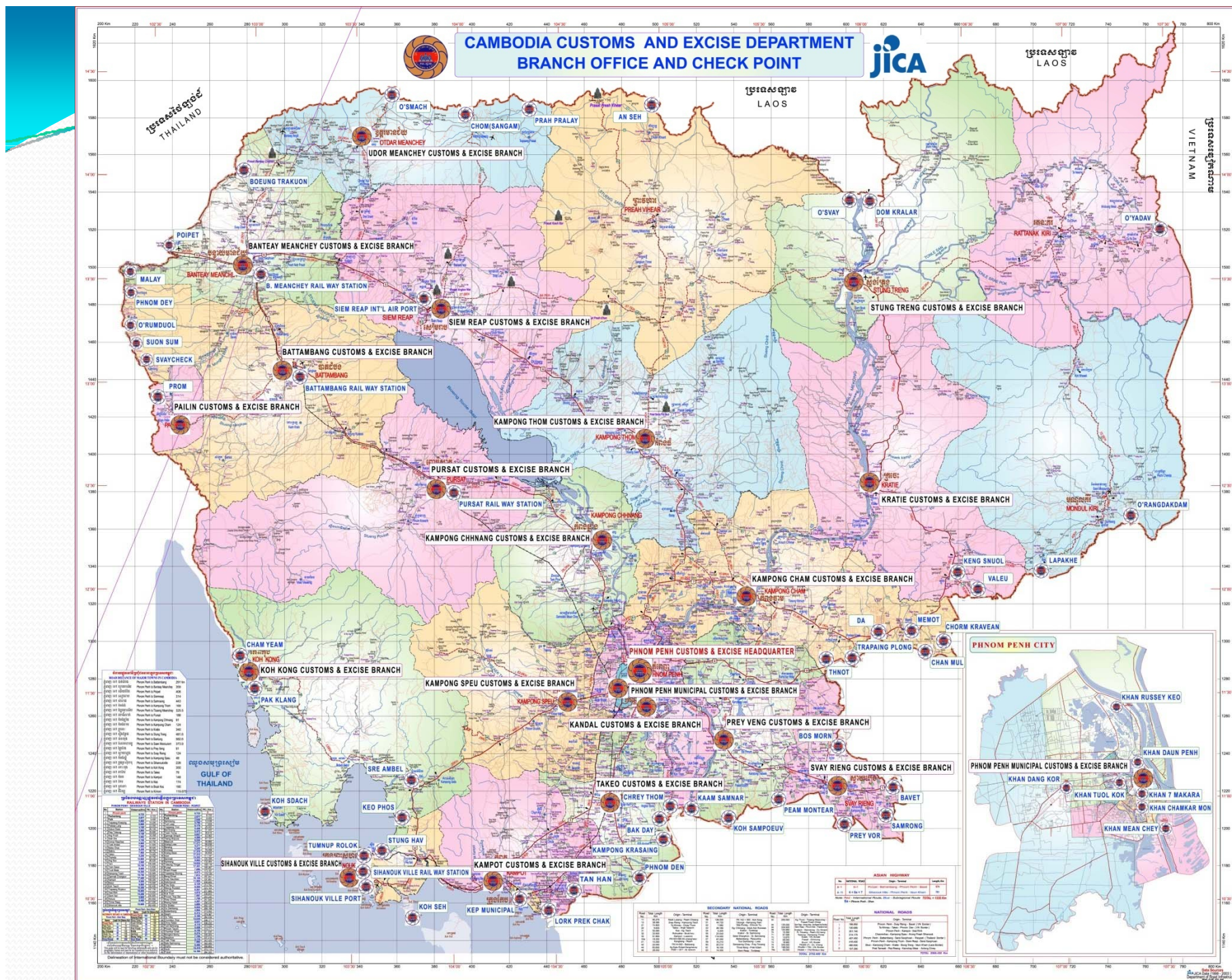


2. Trade Facilitation (Cont'):

2.3. Customs Automation (ASYCUDA World)

- ✓ ASYCUDA; Automated System for Customs Data
- ✓ GDCE selected and signed a project paper on Automated System for Customs Data (ASYCUDA World - AW) with UNCTAD on **April 2006**.
- ✓ Funded by WB
- ✓ SAD form, SAD explanatory notes, reference documents, and relevant instructions have been established.
- ✓ SAD was put into implementation manually since **1st January 2008**.
- ✓ ASYCUDA World pilot implementation in Sihanouk Ville started live implementation on **1st May 2008**.
- ✓ ASYCUDA Rolled out **PPIA** and **DP Office (Tec Srun and Teng Lay)** live implementation (1st January 2010) .







2. Trade Facilitation (Cont'):

2.4. National Single Window

- ✓ Implementation of National Single Window (NSW) is a continuous activity consecutive from ASYCUDA World.
- ✓ The main objective of NSW is connecting computer network between Customs and other competent authorities concerned into one single point of documentary submission, documentary processing, documentary checking, permit/license issuance and approval on Export and Import at one single time.
- ✓ To expedite the speed of NSW implementation and to comply with agreements on development and implementation of ASEAN Single Window (ASW), a National Single Window Steering Committee (NSWSC) was established on 22nd May 2008.



2. Trade Facilitation (Cont'):

2.5. Customs-Private Sector Partnership Mechanism (CPPM)

- ✓ MEF Prakas No. 609 dated 09 October 2009
- ✓ Chaired by H.E. Dr. Pen Siman, Delegate of the RGC, D G of Customs
- ✓ 3 Technical WG (Co-chaired by Customs and Private Sector) :
 - Customs – Export Oriented Garment Industry WG.
 - Customs – Export Oriented Non-Garment Industry WG.
 - Customs – Domestic Market Oriented Business WG.
- ✓ **Public Relation Unit is a secretariat .**
- ✓ Resolve any trade disputes if possible before submitting to other competent bodies.
- ✓ Improve the tax compliance morality, and trade facilitation through the increase in mutual understanding b/w customs and private sector.



3. Security and Protection of Society:

3.1 WCO SAFE Framework of Standards

- ✓ Cambodia being one of the first countries to sign the SAFE Framework of Standards (FOS).
- ✓ GDCE requested the WCO to conduct a diagnostic study of FOS early 2006 with the financial assistance from Japanese Government.
- ✓ After diagnostic study conducted, GDCE has taken some recommendations and integrated the implementation of SAFE FOS as a priority among other priorities of 5 years strategic plan (2009-2013).



3. Security and Protection of Society (Cont') :

3.2 Strengthen strategic enforcement capacity to combat illicit trade, drugs, antiques, counterfeit products, ...

- ✓ So far, Customs have made lots of noticeable achievements including involvement in smuggling suppression especially at Phnom Penh International Airport checkpoint, having received acclaiming letter from WCO
- ✓ In addition, GDCE will continue reinforcing inter-agency relationship in intervention along border by setting up focal point and cooperation from competent authority through superlatively concentrating on intervention along borders

THANK YOU

