

APTFF Capacity Building Workshop on Implementing Trade Facilitation Measures: Perishable Goods & Single Window

**26 September 2014, BITEC
Bangkok, Thailand**



KCS Single Window Case



2014. 9. 26.

Korea Customs Service

Contents

I

Introduction

II

What Is Single Window?

III

KCS Single Window

IV

Effects of Single Window

V

Detailed Development
Procedure



1. Introduction

1. Introduction



Introduction

- Time and cost inefficiency due to multiple channels for import declaration and verification.
- Necessity of building a system where import clearance(KCS) and assessing requirements(OGA) can be collectively accessed
- WCO recommendation on establishing single window in order to simplify clearance process
- Selected as one of the key elements of the logistics center of Far Eastern Asia , one of the strategic projects of Roh administration.

Single Window system that provides one-stop service
accessing permit request and import declaration
at one entry point

2. What is Single Window?



2. What is Single Window?

- Definition

Definition & Goal of KCS Single Window

Definition & goal of KCS Single Window

Providing one-stop clearance service with a single submission of data by developing Single Window connecting KCS and OGAs

Setting up an integrated e-document transmission system reflecting data standardization efforts

Relaying and distributing data for requirement verification application and import declaration to the customs and OGAs through Single Window and offering processing information and results



Providing one-stop service for import declaration & requirement verification application to improve user convenience & share logistics information

3. KCS Single Window



3. KCS Single Window

- Background
- Development Progress
- KCS Single Window
- System Configuration

Background

Background (1)

Need to resolve delays in customs clearance and cut logistics cost caused by double reporting of the same data to the customs and OGAs for verification of requirements including inspection/quarantine

Building Single Window to cut logistics cost and enhance user convenience

Recommendation by int'l organizations including WCO

WCO RKC recommends developing Single Window for exchange between the customs and trading companies of various data including quarantine certificate (Standard 7.4)

Background

Background (2)

Part of 7 Tasks in the Northeast Asia Logistics Hub Roadmap (National Economic Advisory Council)

Development of Single Window for substantial upgrade of the customs clearance system is included in 7 Tasks of the Northeast Asia Logistics Hub Roadmap (Aug. 27, 2003)

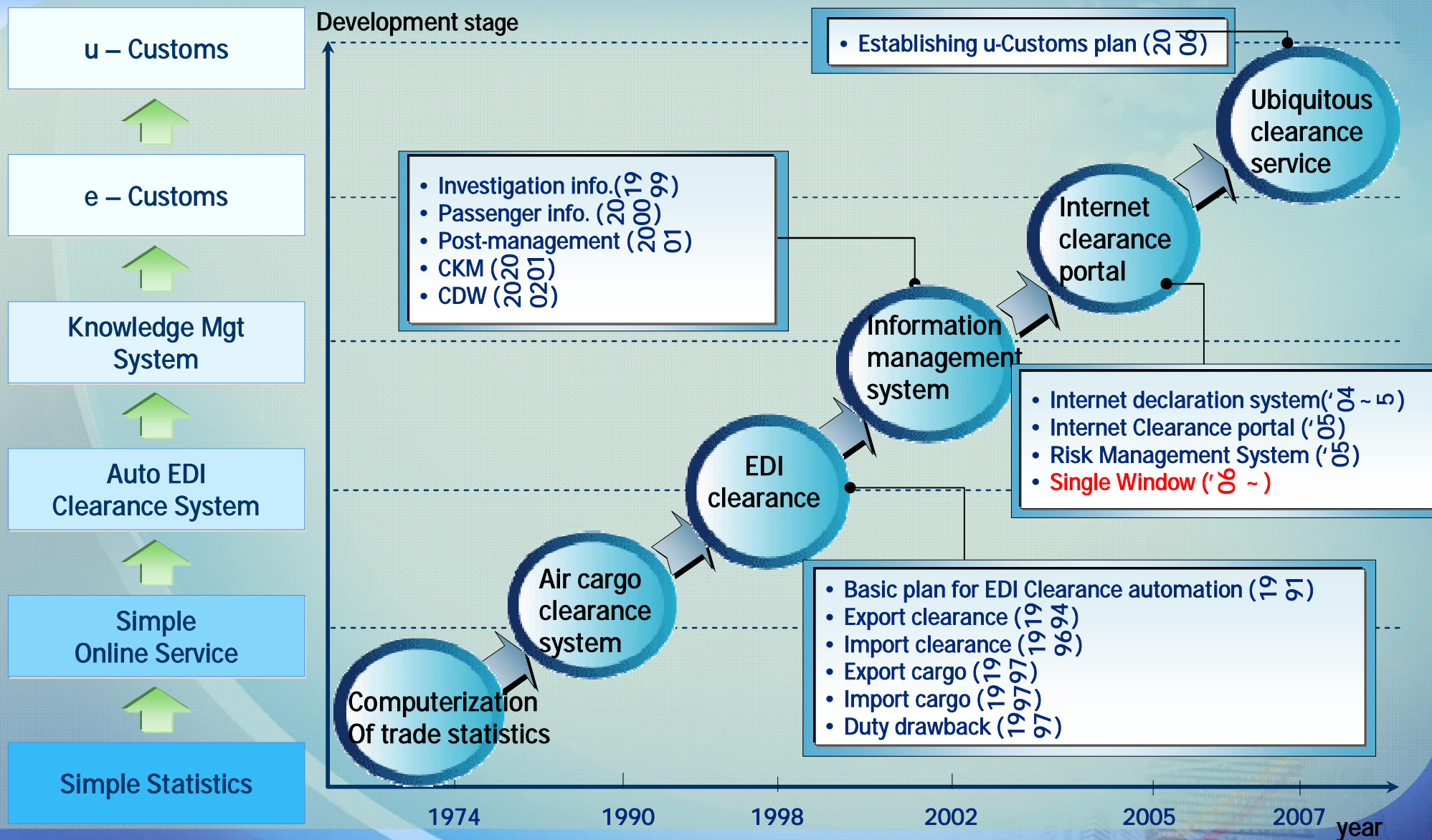
Innovation drive throughout the trade process (National e-Trade Committee)

Rapid changes in IT require dramatic process improvement through organic linkage among established networks

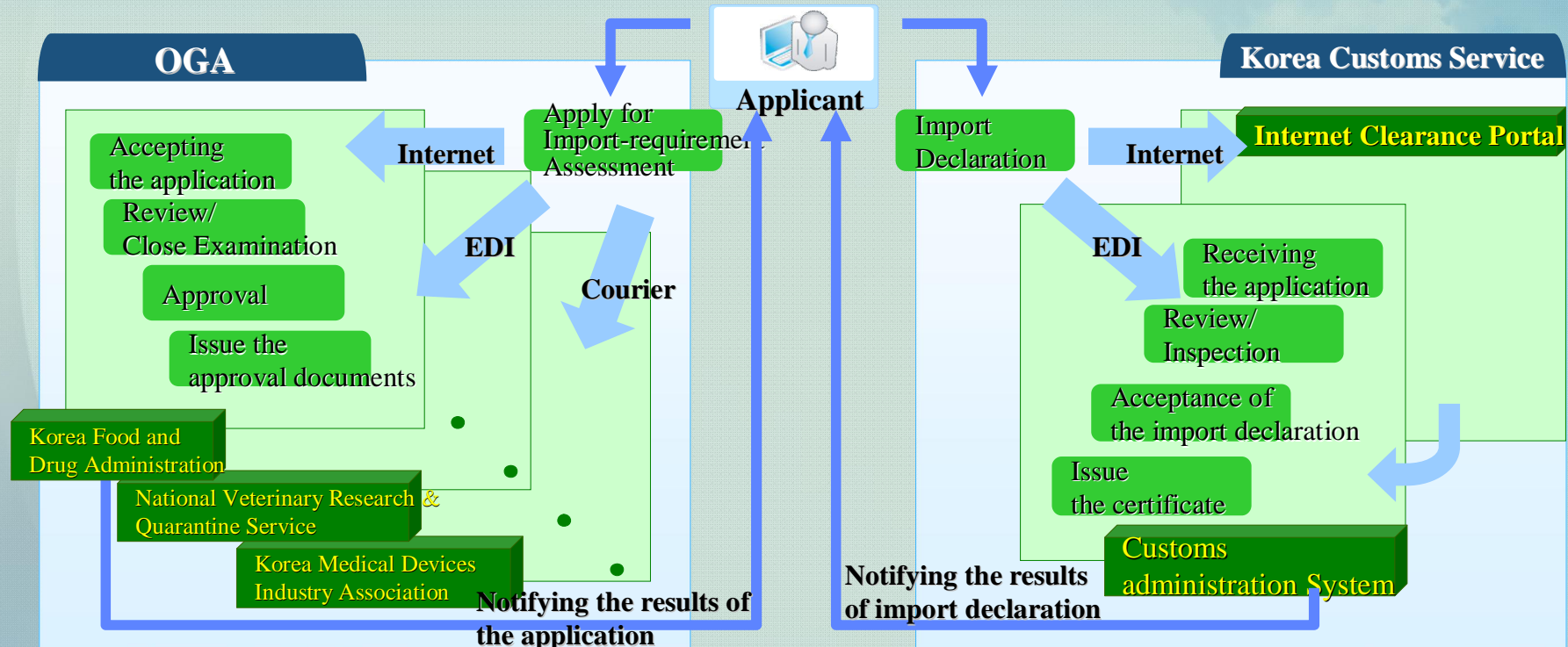
Need for efficient infrastructure connection among organizations and innovation of clearance process for seamless logistics flow

Efforts to standardize data elements in requirement verification documents as a basis for Single Window and innovation in requirement verification process

Overview of KCS intelligence system development stage



Working procedure - Before



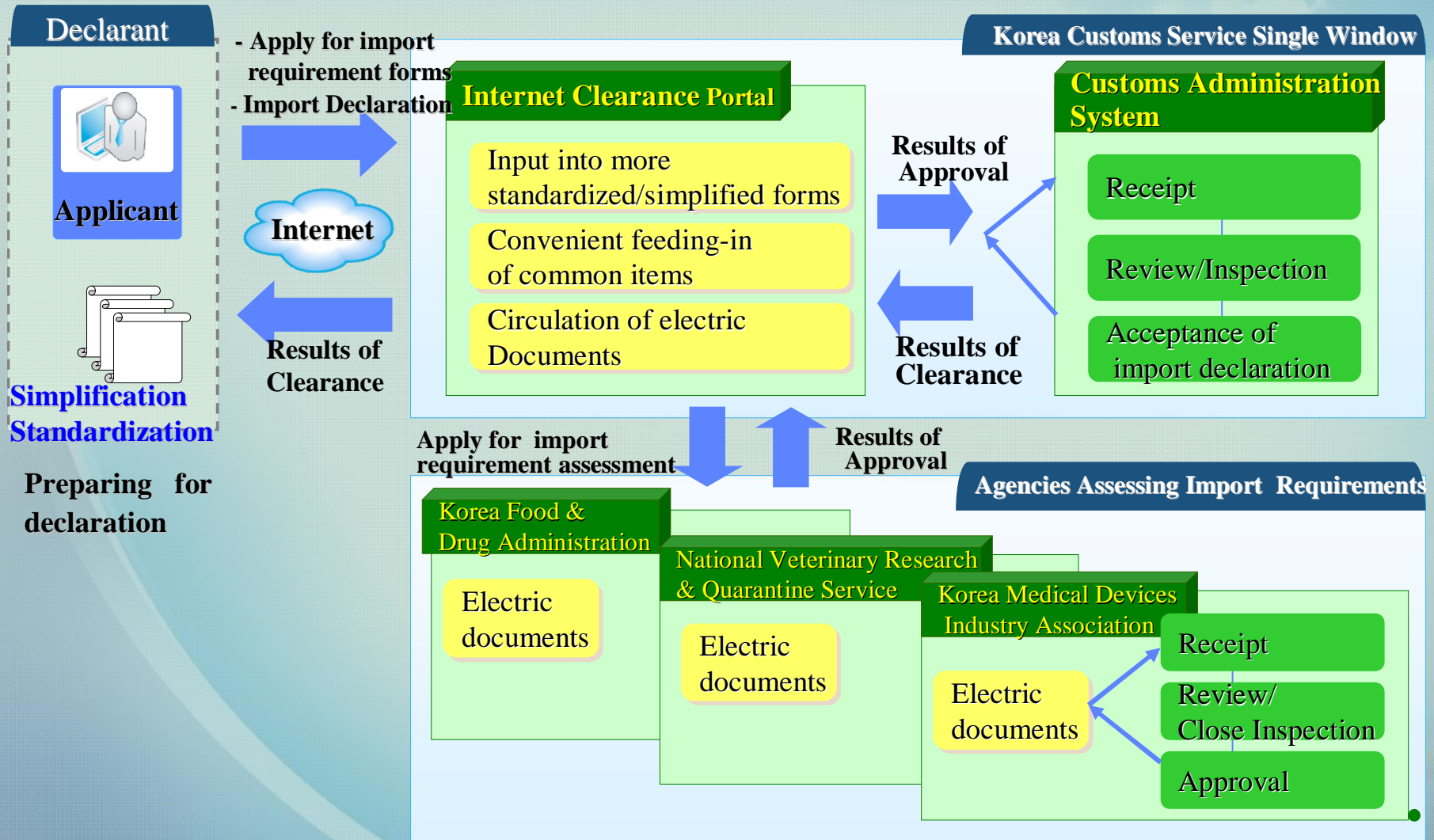
Diagnosis of Problems

Applications for import-requirement assessment and import declaration are separately managed

After applying for the import-requirement assessment, the applicant should report the same items for import declaration.

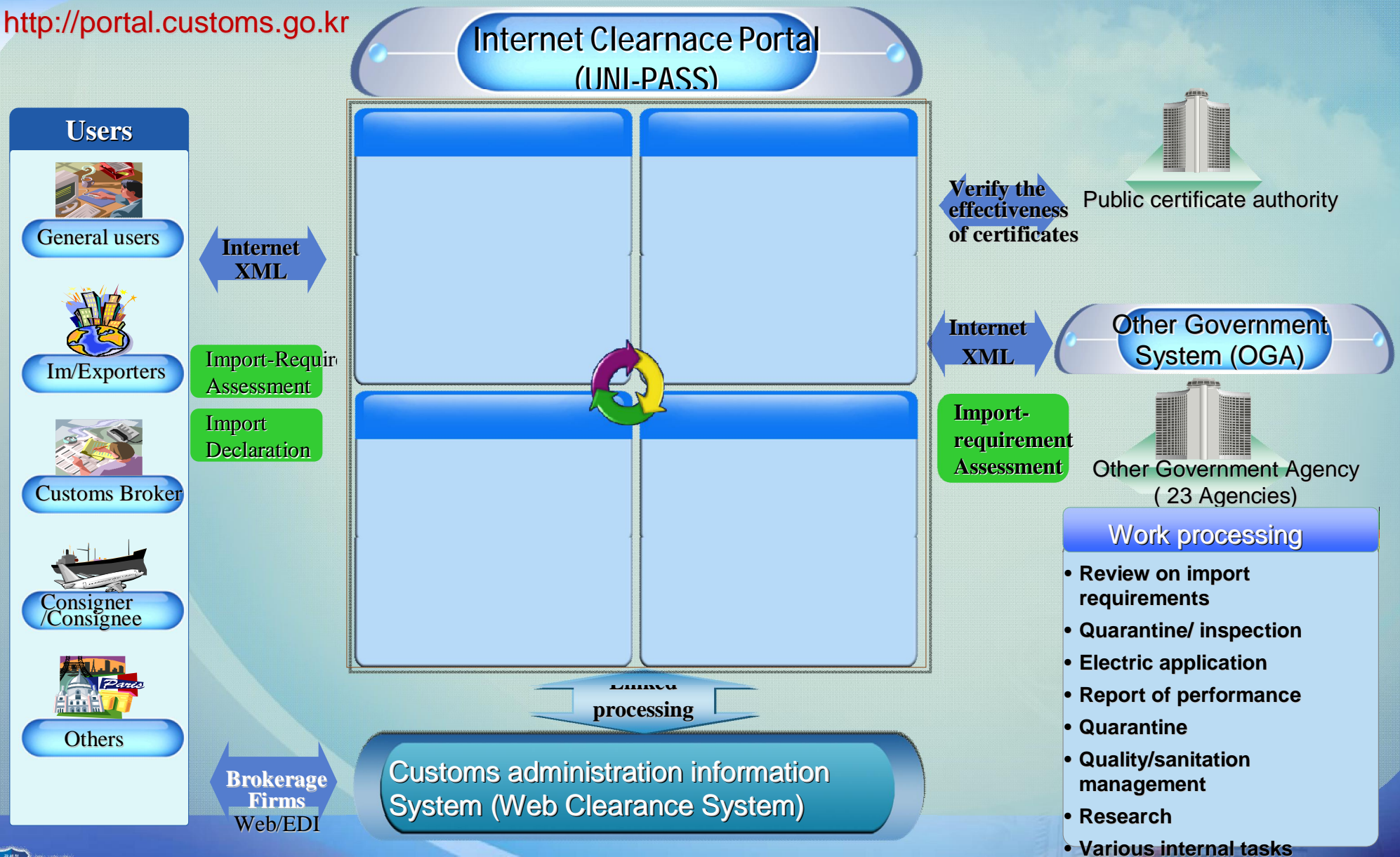
In applying for the import-requirement assessment, methods/systems of application differ by agency.

Working procedure - Now



System Configuration

<http://portal.customs.go.kr>



4. Effects of KCS Single Window



4. Effects of KCS Single Window

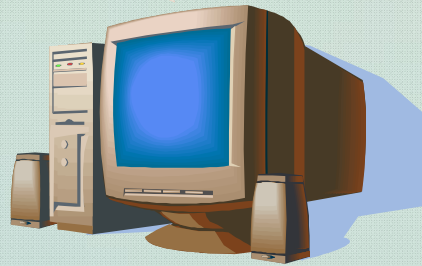
- Qualitative Effects
- Quantitative Effects

Qualitative Effects

Better service

- U One-stop clearance service at one entry point
- U Simplified document form and data elements – raising user convenience

What are the effects of Single Window?



Lower cost

- U Reduced clearance time(1 day) -> lower logistics cost
- U Internet-based system - saving EDI transmission fee

Higher work efficiency

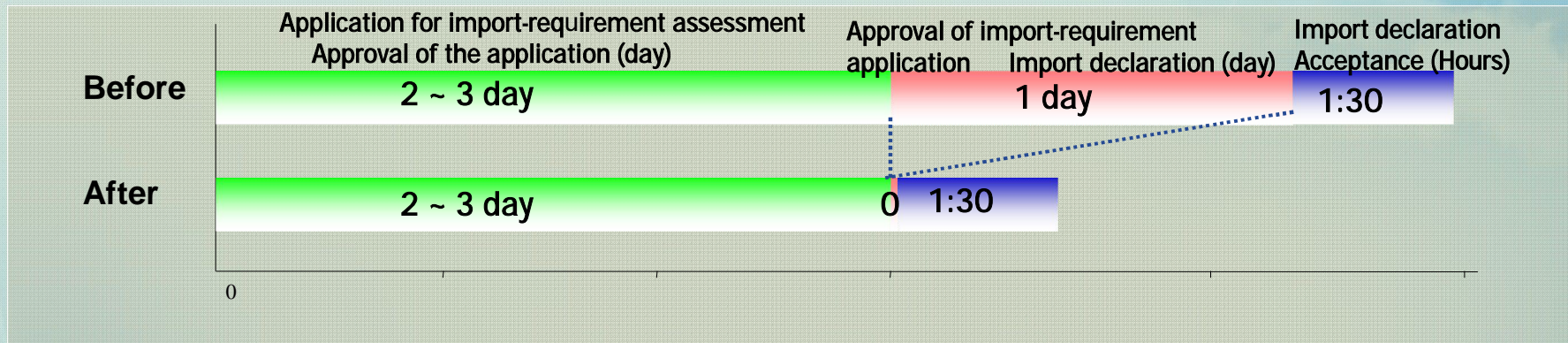
- U Joint use of standardized data in integrated document form
- U Improvement in work processing (Off line On line)

Stronger competitiveness

- U Active response to WCO's recommendation
- U Expansion of e-clearance system- foundation for national competitiveness in logistics

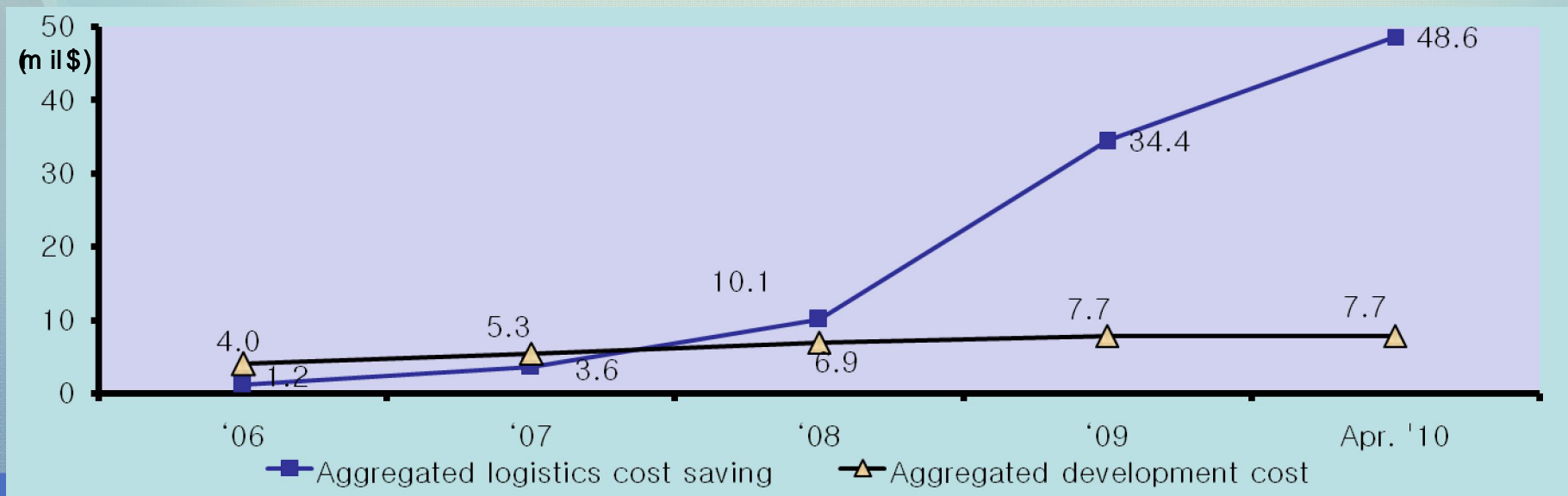
Quantative Effects

Time saving – cutting clearance time by 1 day



Logistics cost saving

* [WB evaluation](#)



5. Detailed Development procedure



5. Detailed Development Procedure

- OGA lists and applications forms
- Foundation of Single Window(1st stage)
- Expansion and Upgrade(2nd stage)
- Highly upgrading and Innovation(3rd stage)
- Expanding Single Window(4th stage)
- Expanding Single Window(5th stage)

5-1. OGA Lists & Application Forms

OGA	Documents	Remarks
The Korea Food & Drug Administration (KFDA)	Import declaration of food products & etc. Import approval application form Export approval application form Raw material import approval application form Raw material export approval application form	Import Import Export Import Export
National Fisheries Products Quality Inspection Service(NFIS)	Import declaration of food products & etc. Quarantine application for fisheries products import/export	Import Import/Export
The National Plant Quarantine Service (NPQS)	Inspection application for import plant Inspection application for export plant	Import Export
National Veterinary Research & Quarantine Service(NVRQS)	Import declaration for livestock item Quarantine application for imported livestock item Application of transport of quarantined imports Quarantine application for exported livestock item Quarantine application for exported animal	Import Import Import Export Export
The Korea Pharmaceutical Traders Association(KPTA) The Korea Medical Devices Industry Association(KMDIA) The Korea Dental Instrument Commerce and Industry Association(KDICIA) The Korea Animal Health Products Association(KAHPA)	Standard clearance report	Import

5-1. Other Government Agencies & Forms

OGA	Documents	Remarks
Korea Environment & Merchandise Testing Institute(KEMTI) Korea Toy Industry Cooperative(KTIC) Korea Testing & Research Institute(KTRI) Korea Testing Laboratory(KTA) FITI Testing & Research Institute Meter and Petrochemical Testing and Research Institute(MPTRI)	Industrial product model certification	Import
Environmental Management Corporation(EMC)	Waste import permission/declaration form Waste export permission/declaration form	Import Export
Radio Research Agency(RRA)	Application for electronic device authentication Application for electronic device clearance	Import
Korea Seed Association(KSA) Korea Cultural Center of Microorganisms Korea Mecine Herbal Association Foundation of Agricultural Technology Commercialization & Transfer Nohghyup Korea Forest Service	Seeds import approval applicatiion form	Import

38 Agencies and 55 Documents (in 19 laws)are available
 with one single ID in a Single window

5-2. Foundation of Single Window Clearance(1st phase)

Target Operation (Initial 8 Agencies)

Agencies Assessing Import Requirements

The Korea Food and Drug Administration

The National Fisheries Products Quality Inspection Service

The National Plant Quarantine Service

National Veterinary Research & Quarantine Service

The Korea Pharmaceutical Traders Association

The Korea Medical Devices Industry Association

The Korea Dental Instrument Commerce and Industry Association

The Korea Animal Health Products Association

Operation

Import declaration of food & etc.
(2 Types)

Application for plant inspection

Import declaration of livestock products

Application for livestock quarantine

Standard reports on customs clearance schedule
(4 Types)

Related Regulations

The Food Sanitation Act

The Plant Protection Act

The Processing of Livestock Products Act

The Prevention of Livestock Epidemics Act

The Pharmaceutical Affairs Act
The Medical Device Act
The Cosmetic Act

5-2. Foundation of Single Window Clearance(1st phase)

Contents

Standardization and Simplification of permit-requirement applications

Establishing OGA connection system to exchange electronic documents

- paperless data transactions

Transferrable requirement applications to customs declaration forms

- one time submit in a single window

Establishing e-payment system for fee collection

Developing and providing XML document UPLOAD modules for EDI user S/W

5-3. Expansion and Upgrade (2nd phase)

Target Operation (Upgrading and plus 5 Agencies)

Agencies Assessing Import Requirements

The Korea Food and Drug Administration

The National Plant Quarantine Service

National Veterinary Research & Quarantine Service

Korea Environment & Merchandise Testing Institute (KEMTI)

Korea Toy Industry Cooperative (KOTOY)

Korea Testing & Research Institute (KTR)

Korea Testing Laboratory (KTL)

Korea Apparel Testing & Research Institute (KATRI)

Operation

Application of requirement
Assessment of drugs

Inspection Application for
Plant ex/import

Application of transport notice
quarantined imports and
quarantine of livestock exports
(2 more)

Application of requirement
assessment on
quality and safety of
manufactured goods

Related Regulations

Law on the drug control

The Plant Quarantine Act

Livestock processing Act

Act on the prevention of
livestock epidemics

Quality management and
Safety control of industrial
Products Act

5-3. Expansion and Upgrade (2nd phase)

Contents

establishing an ASP system to deal with the requirement application about the quality and safety assessments for manufactured goods.

Enhancing the e-payment system for fee collection

Developing and providing XML document UPLOAD module for EDI user S/W for newly added application forms

Building requirement assessment system for drugs in KFDA

Expanding exist systems by adding application forms in NVQS and NPQS

5-4. Highly Upgrading & Innovation(3rd phase)

Target Operation (Highly Upgrading and plus 2 Agencies)

Agencies Assessing Import Requirements

The Korea Food and Drug Administration

The National Fisheries Products Quality Inspection Service

The National Plant Quarantine Service

National Veterinary Research & Quarantine Service

The Korea Pharmaceutical Traders Association

The Korea Medical Devices Industry Association

The Korea Dental Instrument Commerce and Industry Association

The Korea Animal Health Products Association

Operation

Import declaration of foods & others
Im/Export approval
application of drugs

Inspection Application for Plant ex/import

Application of transport notice of quarantined imports and quarantine of livestock exports(2 more)

Application of requirement assessment on quality and safety of manufactured goods

Related Regulations

The Food Sanitation Act
Law on the drug control

The Plant Protection Act

The Processing of Livestock Products Act
The Prevention of Livestock Epidemics Act

The Pharmaceutical Affairs Act
The Medical Device Act
The Cosmetic Act

Quality management and Safety control of industrial Products act

5-4. Highly Upgrading & Innovation(3rd phase)

Contents

Highly upgrading over all procedure and expended 2 more agencies

completing the actual single window system by automatic transferring OGA approvals to customs declaration system

making more convenient inquiry process from requirement application processing to the completed customs declaration

Establishing very efficient and user friendly systems

5-5. Expanding Single Window (4th phase)

Target Operation (plus 2 Agencies and Standardized D.M.)

Agencies Assessing Import Requirements

Korea Environment Corporation

Radio Research Agency

Operation

Waste export permission/declaration form

Waste import permission/declaration form

Application for electronic device authentication

Application for electronic device clearance

Related Regulations

Waste Management Act

Act on the Movement and the handling of waste between nations

Broadcasting and communications equipment, type approval and EMC on the type of registration notices

Act on The type approval of telecommunications equipment

Establishment of WCO DM 3.0 based electronic document standardization system

5-5. Expanding Single Window (4th phase)

Contents

Establishing the single window system at the basis of Customs Data Mode Projects for the standardized electronic documents protocols

Renovation of all the procedures and data elements of the single window systems by the WCO D.M 3.0 protocols

It makes possible KCS single window to improve for the global single window at the basis of internationally standardized electronic document procedure protocols

5-6. Expanding Single Window (5th phase)

Target Operation (plus 6 Agencies)

Agencies Assessing Import Requirements

Korea Seed Association

Korea Cultural Center of
Microorganixms

Korea Medicine Herbal
Association

Foundation of Agricultural
Technology Commercialization
& Transfer

Nonghyup

Korea Forest Service

Operation

Seeds import approval
application form

Related Regulations

The Seed Act

Q & A