



Uiwang ICD





Contents

I History

II Facility & Equipment

III Occupants

IV Working Process

V Functions of ICD

VI Effects of ICD



ICD (Inland Container Depot)

- **logistic place**
- **establish in inland not at sea port**
- **perform consolidated logistic functions**
 - ▷ **storing**
 - ▷ **transporting**
 - ▷ **stevedoring**
 - ▷ **customs clearance**



Uiwang Inland Container Depot



I. History

- '84. 7 Construction of Railroad Freight Depot
- '91. 5 Finalization of Construction Plan of ICD
(SOC Investment Coordination Committee)
- '92. 4 Establishment of Corporation
 - o Stockholders
 - Korea Railroad : 25%
 - Transportation Companies(15) : 75%
 - o Purpose : Strengthening national competitive power by minimizing logistics cost
- '93. 7 Commencement of ICD operation (Terminal No.1)
- '94.12 Start construction of ICD
- '96.10 Completion of Construction of ICD
 - o Total cost : US\$30Million
 - o Container Handling Capacity : 1.3Million TEU/Year
- '97.1 Open of Terminal No.2



II. Facility

Item	Description
Total of Lands (Area)	753,000 m ²
Container Yard	417,000 m ²
C.F.S (Bonded Warehouse)	10,700 m ² (3 bldgs)
Operation Building	140,000 m ² (8 bldgs)
Automobile Maint. Shop	1,720 m ² (1 bldgs)
Container Maint. Shop	1,220 m ² (1 bldgs)
Reefer Plug	96 Unit
Railway	6,262 m (11 lines)
Gas Station	480 ^{kl}

II. Equipment

Transfer Crane (3EA)



(RTGC type)

Reach Stacker (43EA)



Tractor (650EA)



Trailer (1800EA)



III. Occupants

Operation Structure

Uiwang ICD Co., Ltd

- ▶ Management of Facility
- ▶ Loading/Unloading of Railroad Container
- ▶ Public Container Yard Operation Bonded Area Operation
- ▶ Sales of Petroleum

Stockholders Company

- ▶ Transportation of Container
- ▶ Operation of CY(Container Yard) & CFS (Container Freight Station)
- ▶ Automobile & Container Maint. Shop

Government Body

Name

Major Function

Custom House
Foodstuff Inspection
Plant Quarantine
Railroad Station

Customs clearance procedure
Inspection of imported Foodstuff
Quarantine of imported agri-product
Railroad Transport of Container

Others

- Customs Clearance Brokers
- Transportation Brokers (20)
- Convenient Facilities

* Working person : 1,000



〈Main Bldg〉

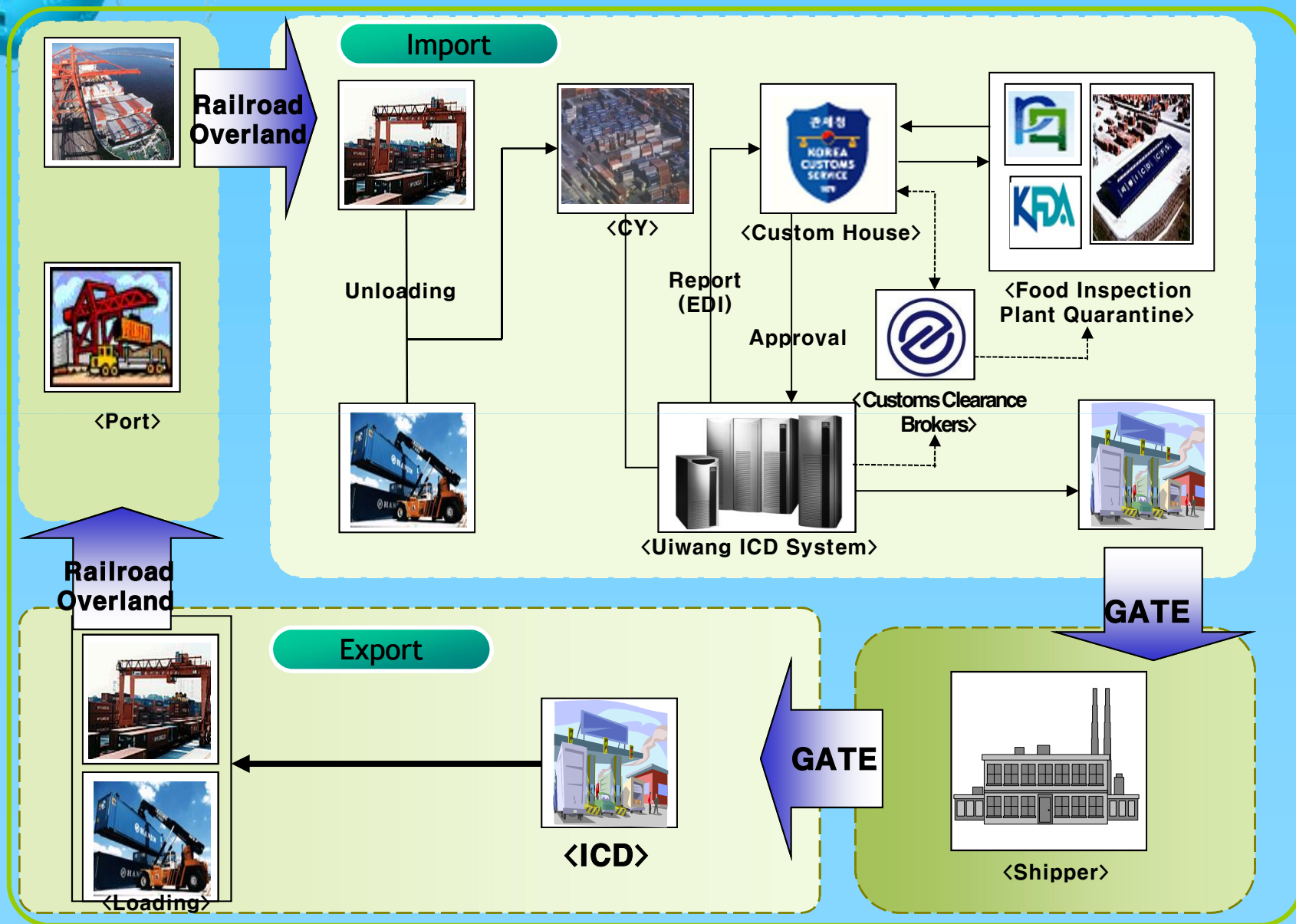


〈Railroad Station〉



〈Custom House〉

IV. Working Process



Status of Container Freight Transportation



V. Functions of ICD

Inland Container Terminal

- Perform CY(Container-Yard), CFS (Container Freight Station) function like Ports



Record

Item	(TEU)			
	2008	2009	2010	2011
Railroad	622,217	382,391	425,769	502,366
Overland	320,856	396,165	477,132	493,368
Total	943,073	778,556	902,901	995,734

Railroad Transportation

- Eco-friendly, Fast, Safe & Mass Transportation
- Capacity of Transport
 - 44 Trains per day (2,600TEU)
 - Uiwang ICD ↔ Busan, Gwangyang Ports



Record		(TEU)			
Item	2008	2009	2010	2011	
Arrival	326,708	197,608	205,160	230,685	
Dispatch	295,509	184,783	220,609	271,681	
Total	622,217	382,391	425,769	502,366	

Customs Clearance

- One-stop Service
Custom House, Food Inspection Office,
Plant Quarantine Office station in ICD
- Check the customs procedure in real time
on Integral Logistics Network

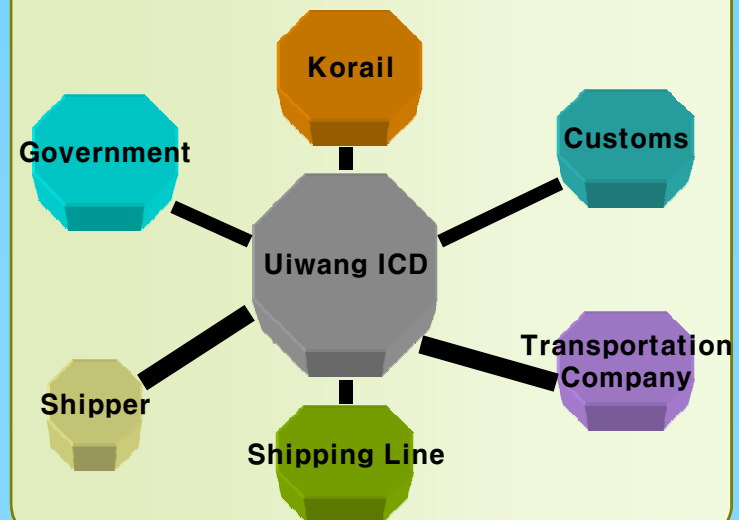


Record

(TEU)

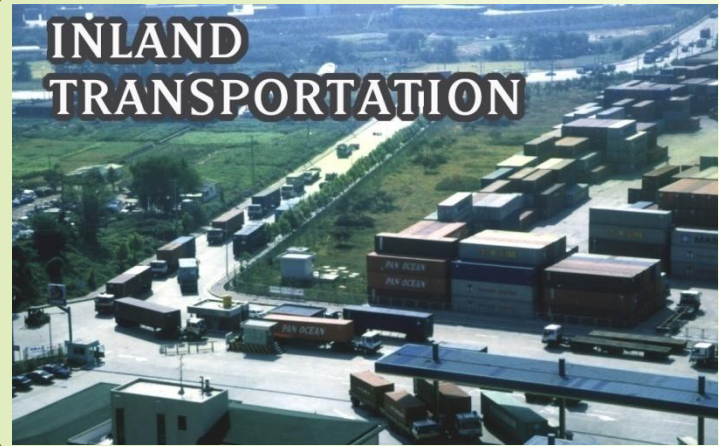
<u>Item</u>	<u>2008</u>	<u>2009</u>	<u>2010</u>	<u>2011</u>
Import	51,390	36,055	39,202	43,989
Export	3,550	-	-	-
Total	54,940	36,055	39,202	43,989

Information Network

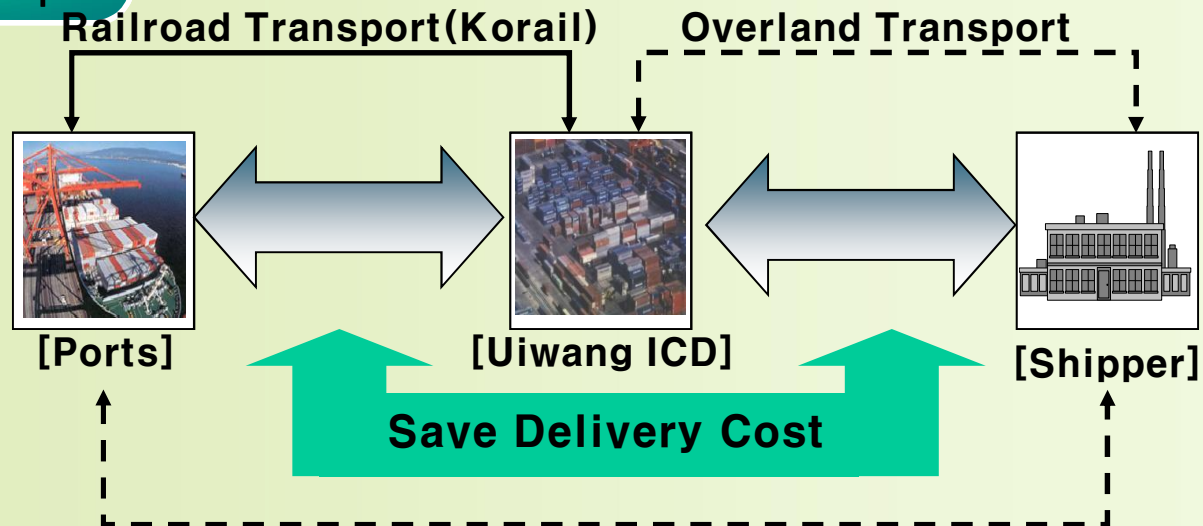


Inland Transportation

- Deliver Empty Container shortest distance
- Combine Transport with Railroad & Overland



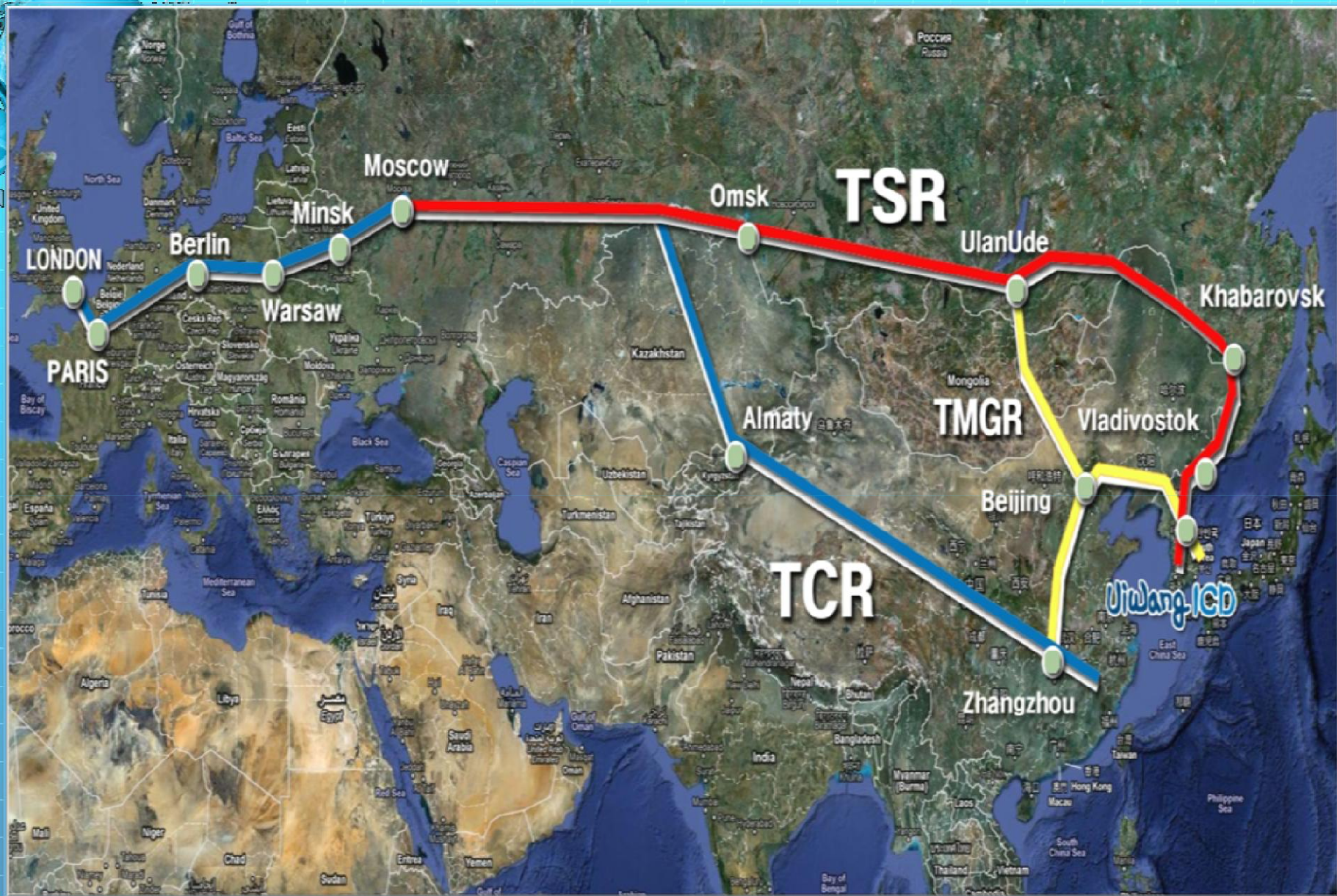
Flow of Transport





VI. Effects of ICD

- **Relief of Traffic Congestion by large volume of Railroad Transport**
(Capacity of daily Railroad Transport : 2,600TEU)
- **Utilization as Clearance Depot for Capital Region's Import/Export Container cargoes**
(Curtailement of cost and time)
- **Perform the Function of CY/CFS at Inland as Ports**
(Relief of Accumulated cargo at Ports)
- **Operate an Information system of transportation logistics for efficient and fast customer**
(Supplying Logistics Information at real time)



Vision of Uiwang ICD



450 Yi-dong Uiwang-City, Gyeonggi-Do, KOREA

Tel : +82-31-461-6100

Fax : +82-31-461-7010

www.uicd.co.kr

mail:dhcho62@hanmail.net